



All Africa Housing (PTY) LTD

Bringing affordable housing to all of Africa

Malawi Housing

INDEX

- About Us
- Product Overview
- Advantages
- Certifications
- Installation Detail
- Specifications
- Why Choose Us
- Options & Pricing
- Contact Us



ABOUT US

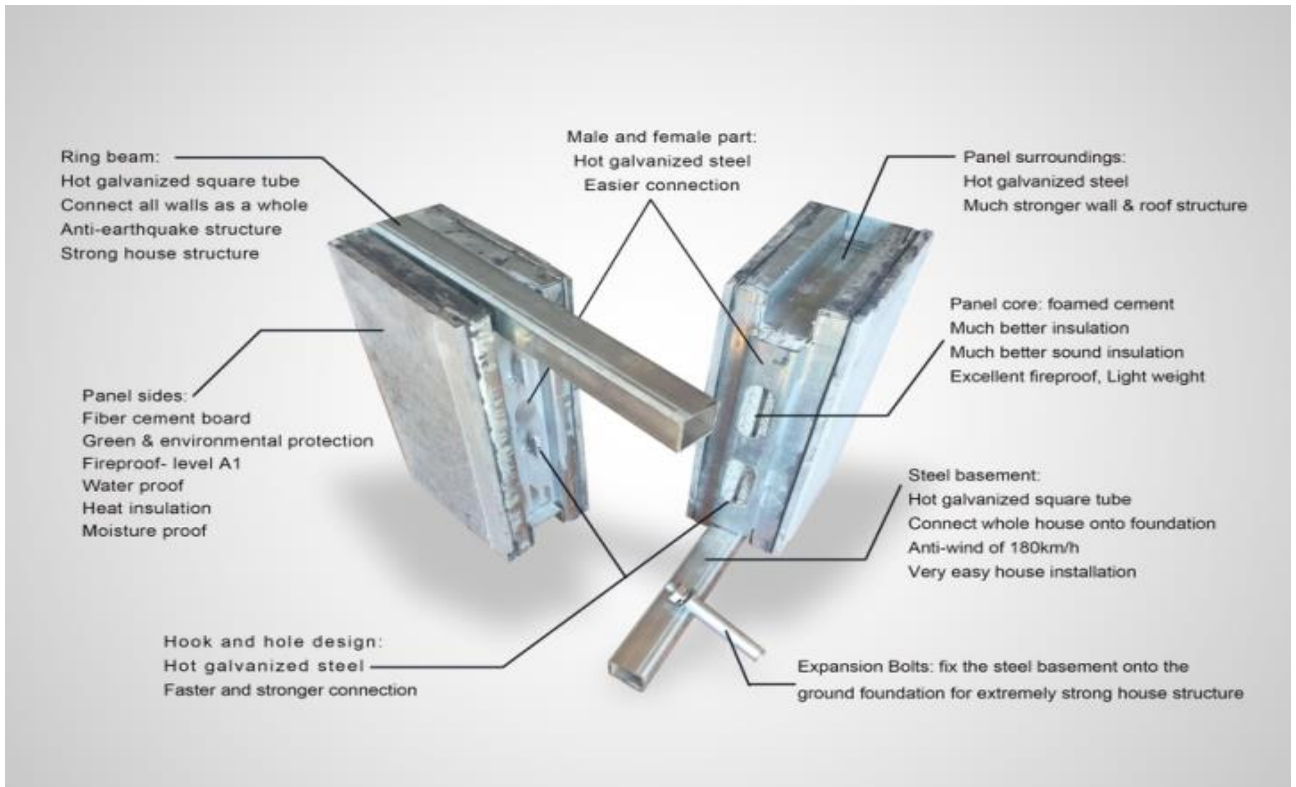
All Africa Housing (PTY) LTD specialize in the custom design of affordable and 100% Green building materials to all sectors of the construction industry

We are driven by a strong team of well experienced people. Together bringing more than a hundred years of construction facilitating, management, investment and skills training to the table, all equally devoted and motivated in supplying a range of products that are unparalleled in the industry.



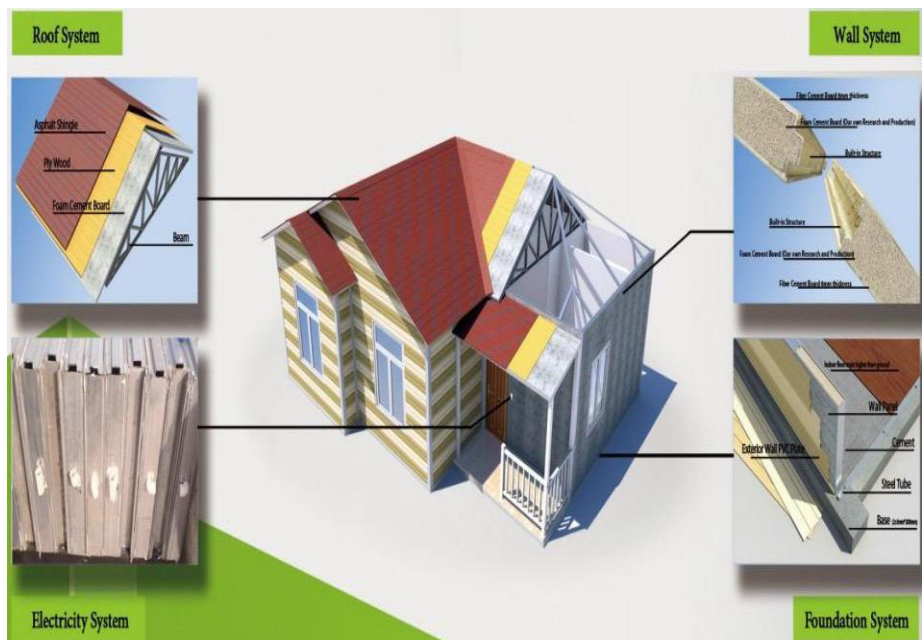
PRODUCT OVERVIEW

A prefabricated panel consisting of a hot dipped galvanized frame, aerated concrete center and fiber cement panels on either side. Panels interlock with each other to form a strong and durable wall.



ADVANTAGES

- Fast Installation Time
- Save
- Level 1A fireproof
- High Strength & Impact Resistant
- Excellent Earthquake, Wind & Weight Capacity
- Low Thermal Conductivity & Energy Efficient
- Excellent Heat & Sound Insulation
- Natural Product that are Mold & Rodent Resistant
- Low Maintenance
- Environmentally Friendly
- Less Water and Resources on Site Needed
- Flexible Design
- Built in Plumbing & Electrical
- Life Span of Over 50 Years



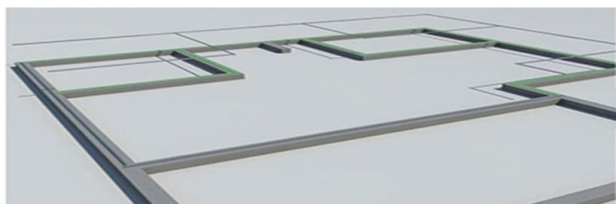
CERTIFICATIONS

- **SGS International Test Certificate**
- **Agrement South Africa Bureau Test Report**
- **SABS South African Bureau of Standards Test Report**
- **TUV German Bureau Test Report**
- **ISO International Quality Management System Certificate**
- **SIRIM & BOMBA (Malaysia)**



INSTALLATION

1. Assembling Process

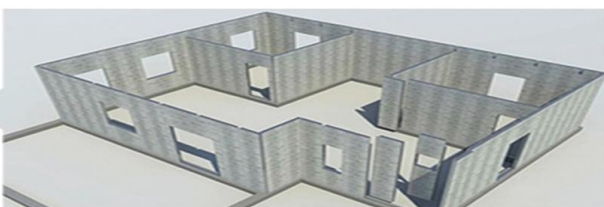


A

Make 25mm*25mm concrete or brick strip foundation.

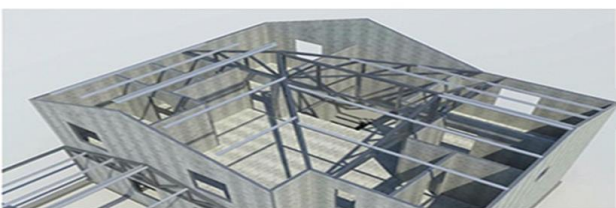
Install the wall panel

B



Install the roof beam and purline

C



Install the roof panel & water proof material

D



Decoration with different options

E



SPECIFICATIONS

Wall Panel Thickness	90mm standard , or as request such as 70mm, 115mm, 140mm
Height	3000mm standard, also could be increased
Width	600mm standard
Roof Panel	Thickness same as wall panel
Length	2400mm, could be designed different shapes by the roof drawing request.
Width	same as wall panel
Door and Window Panel.	Thickness same as wall panel.
Door height	Same as wall panel.
Door width	1200mm standard could be increased as request.
Face and Back	6mm Fiber cement panel. Inside foam cement.
	Surrounded by light steel frame with hooks for stronger and install easier.

Life Span	More than 50 years
Fireproofing	A1 Level
Assembling Speed	Two man-hours finish 52 m2 house without decoration (one man-hour is one worker working eight hours)
House Strength	Steel structure every 600mm
Decoration	Easy and various
Earthquake Rating	Up to Richter 8 or as required
Wind Load	180km/h or as required 180km/h
Sound Insulation	Min 40dB (90mm thick wall)
Thermal Conductivity	0.1035 W/m.K (94mm thick wall has the same thermal conductivity as 350mm brick wall)

WHY CHOOSE US

- Full funding provided
- Large scale job creation
- Training & skills development
- Internship program
- Very fast turn around time
- Full support
 - Project management
 - Training
 - Quality control



MODEL 1



Bedrooms 2

Bathrooms 1

Lounge

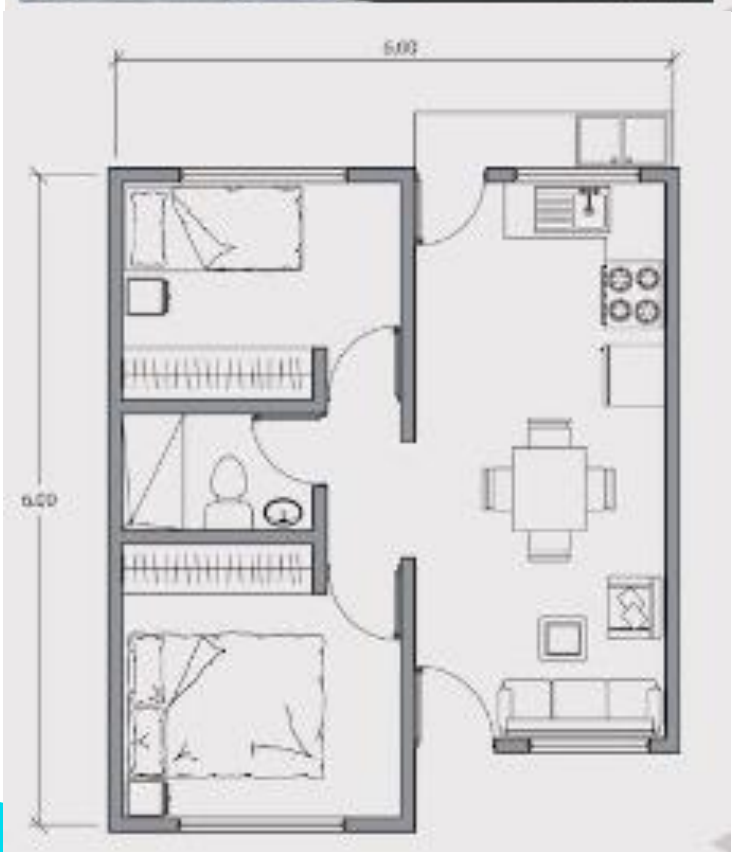
Dining room

Kitchen

House cost & repayment

House size	SQM	32
Cost per SQM		\$ 504
Total build cost		\$ 16128
Intrest rate		% 15%
Total per anum		\$ 2419,2
Total period	Years	20
Total intrest + Cost to build		\$ 64512
Monthly repayment		\$ 268,8
Total repayment to investors per month		\$ 228,48
Total repayment of intrest per month	5%	11,42
Toatl amount		\$ 239,9
Totalo to government per month		\$ 28,9

MODEL 2



Bedrooms 2

Bathrooms 1

Lounge

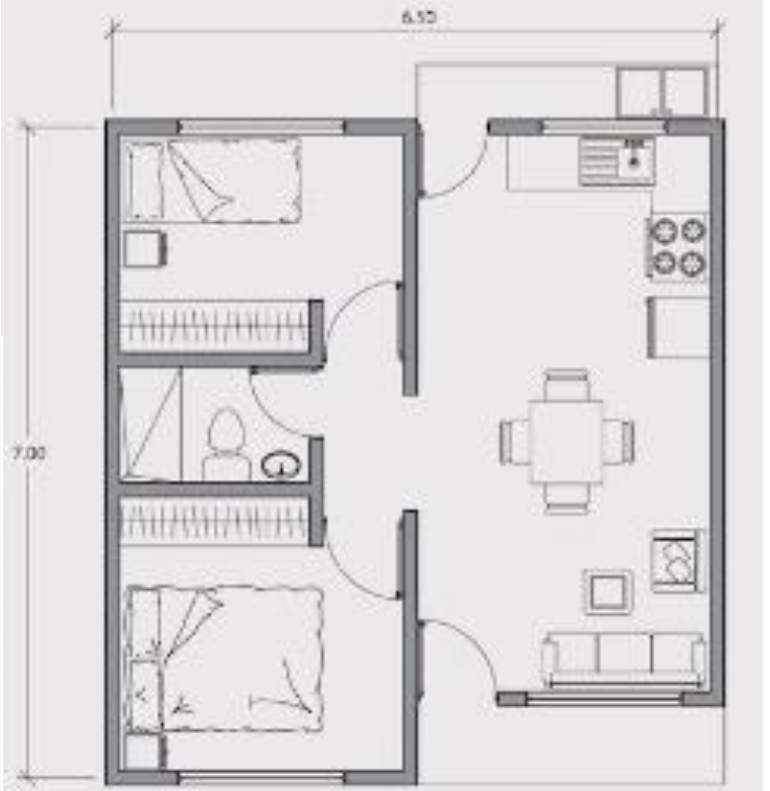
Dining room

Kitchen

House cost & repayment

House size	SQM	42
Cost per SQM		\$ 504
Total build cost		\$ 21168
Intrest rate		% 15%
Total per anum		\$ 3175,2
Total period	Years	20
Total intrest + Cost to build		\$ 84672
Monthly repayment		\$ 352,8
Total repayment to investors per month		\$ 299,88
Total repayment of intrest per month	5%	14,99
Toatl amount		\$ 314,87
Total to government per month		\$ 37,93

MODEL 3



Bedrooms 2

Bathrooms 1

Lounge

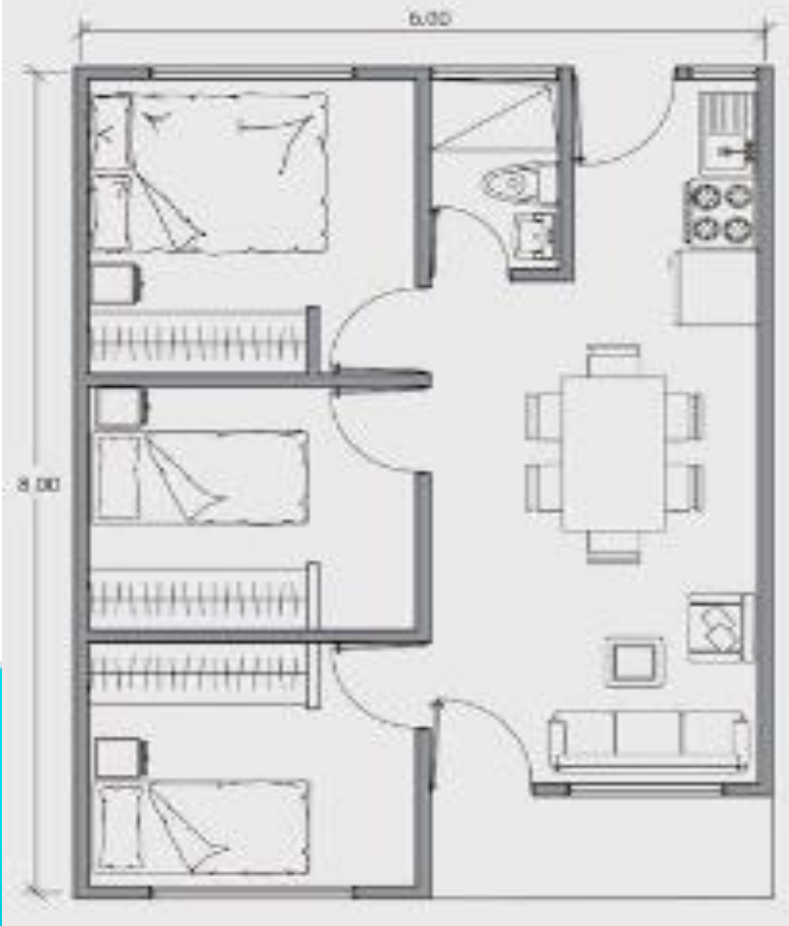
Dining room

Kitchen

House cost & repayment

House size	SQM	48
Cost per SQM		\$ 504
Total build cost		\$ 24192
Intrest rate		% 15%
Total per anum		\$ 3628,8
Total period	Years	20
Total intrest + Cost to build		\$ 96768
Monthly repayment		\$ 403,2
Total repayment to investors per month		\$ 342,72
Total repayment of intrest per month		5% 17,13
Toatl amount		\$ 359,85
Totoal to government per month		\$ 43,35

MODEL 4



Bedrooms 3

Bathrooms 1

Lounge

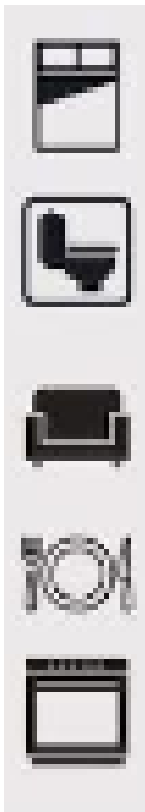
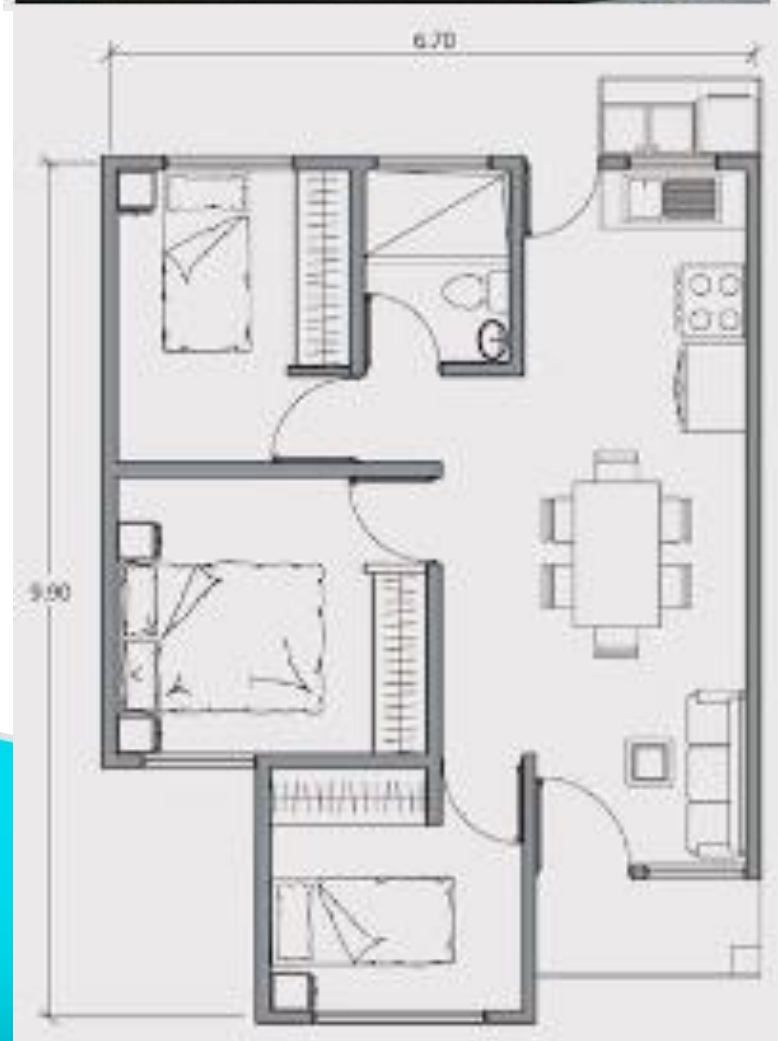
Dining room

Kitchen

House cost & repayment

House size	SQM	50
Cost per SQM		\$ 504
Total build cost		\$ 25200
Intrest rate		% 15%
Total per anum		\$ 3780
Total period	Years	20
Total intrest + Cost to build		\$ 100800
Monthly repayment		\$ 420
Total repayment to investors per month		\$ 357
Total repayment of intrest per month	5%	17,85
Toatl amount		\$ 374,85
Totalo to government per month		\$ 45,15

MODEL 5



Bedrooms 3

Bathrooms 1

Lounge

Dining room

Kitchen

House cost & repayment

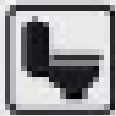
House size	SQM	56
Cost per SQM		\$ 504
Total build cost		\$ 28224
Intrest rate		% 15%
Total per anum		\$ 4233,6
Total period	Years	20
Total intrest + Cost to build		\$ 112896
Monthly repayment		\$ 470,4
Total repayment to investors per month		\$ 399,84
Total repayment of intrest per month	5%	19,99
Toatl amount		\$ 419,83
Total to government per month		\$ 50,57

MODEL 6

AREA 63 M²



Bedrooms 2



Bathrooms 1



Lounge



Dining room



Kitchen

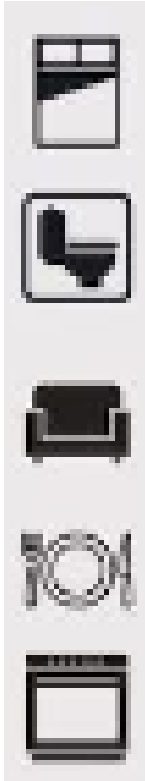
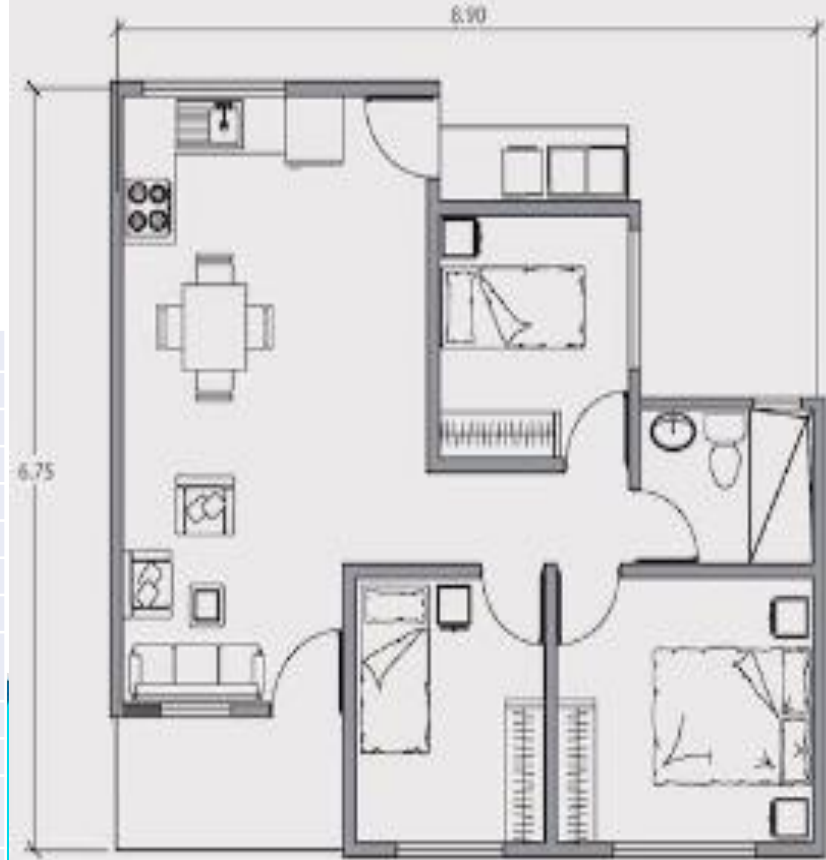


House cost & repayment

House size	SQM	63
Cost per SQM		\$ 504
Total build cost		\$ 31752
Intrest rate		% 15%
Total per anum		\$ 4762,8
Total period	Years	20
Total intrest + Cost to build		\$ 127008
Monthly repayment		\$ 529,2
Total repayment to investors per month		\$ 449,82
Total repayment of intrest per month	5%	22,49
Toatl amount		\$ 472,31
Totoal to government per month		\$ 56.89

MODEL 7

AREA 63 M²



Bedrooms 3

Bathrooms 1

Lounge

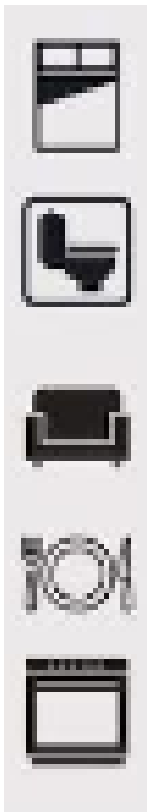
Dining room

Kitchen

House cost & repayment

House size	SQM	63
Cost per SQM		\$ 504
Total build cost		\$ 31752
Intrest rate		% 15%
Total per anum		\$ 4762,8
Total period	Years	20
Total intrest + Cost to build		\$ 127008
Monthly repayment		\$ 529,2
Total repayment to investors per month		\$ 449,82
Total repayment of intrest per month		5% 22,49
Toatl amount		\$ 472,31
Totoal to government per month		\$ 56,89

MODEL 8



Bedrooms 3

Bathrooms 2

Lounge

Dining room

Kitchen

House cost & repayment

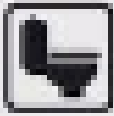
House size	SQM	75
Cost per SQM		\$ 504
Total build cost		\$ 37800
Intrest rate		% 15%
Total per anum		\$ 5670
Total period	Years	20
Total intrest + Cost to build		\$ 151200
Monthly repayment		\$ 630
Total repayment to investors per month		\$ 535,5
Total repayment of intrest per month	5%	26,77
Toatl amount		\$ 562,27
Totoal to government per month		\$ 67,73

MODEL 9

AREA 96 M²



Bedrooms 3



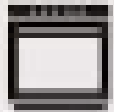
Bathrooms 2



Lounge



Dining room



Kitchen



House cost & repayment

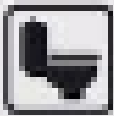
House size	SQM	96
Cost per SQM		\$ 504
Total build cost		\$ 48384
Intrest rate		% 15%
Total per anum		\$ 7257,6
Total period	Years	20
Total intrest + Cost to build		\$ 193536
Monthly repayment		\$ 806,4
Total repayment to investors per month		\$ 685,44
Total repayment of intrest per month	5%	34,27
Toatl amount		\$ 719,71
Totoal to government per month		\$ 86,69

MODEL 10

AREA 144 M²



Bedrooms 3



Bathrooms 2



Lounge



Dining room



Kitchen



House cost & repayment

House size	SQM	144
Cost per SQM		\$ 504
Total build cost		\$ 72576
Intrest rate		% 15%
Total per anum		\$ 10886,4
Total period	Years	20
Total intrest + Cost to build		\$ 290304
Monthly repayment		\$ 1209,6
Total repayment to investors per month		\$ 1028,16
Total repayment of intrest per month		5% 51,4
Toatl amount		\$ 1079,56
Total to government per month		\$ 130,04

MODEL 11



Bedrooms 2



Bathrooms 1 + ½



Lounge



Dining room



Kitchen



Laundry



Study



House cost & repayment			Total repayment to investors per month	
House size	SQM	78	Total repayment of intrest per month	\$ 556,92
Cost per SQM		\$ 504	Total amount	5% 27,84
Total build cost		\$ 39312	Total to government per month	\$ 584,76
Intrest rate		% 15%		\$ 70,44
Total per anum		\$ 5896,8		
Total period	Years	20		
Total intrest + Cost to build		\$ 157248		
Monthly repayment		\$ 655,2		

MODEL 12



Bedrooms 3

Bathrooms 1 + ½

Lounge

Dining room

Kitchen

Laundry



House cost & repayment			Total repayment to investors per month	\$ 592,62
House size	SQM	83	Total repayment of intrest per month	5% 29,63
Cost per SQM		\$ 504	Toatl amount	\$ 622,25
Total build cost		\$ 41832	Totoal to government per month	\$ 74,95
Intrest rate		% 15%		
Total per anum		\$ 6274,8		
Total period	Years	20		
Total intrest + Cost to build		\$ 167328		
Monthly repayment		\$ 697,2		

MODEL 13



Bedrooms 3

Bathrooms 1 + ½

Lounge

Dining room

Kitchen

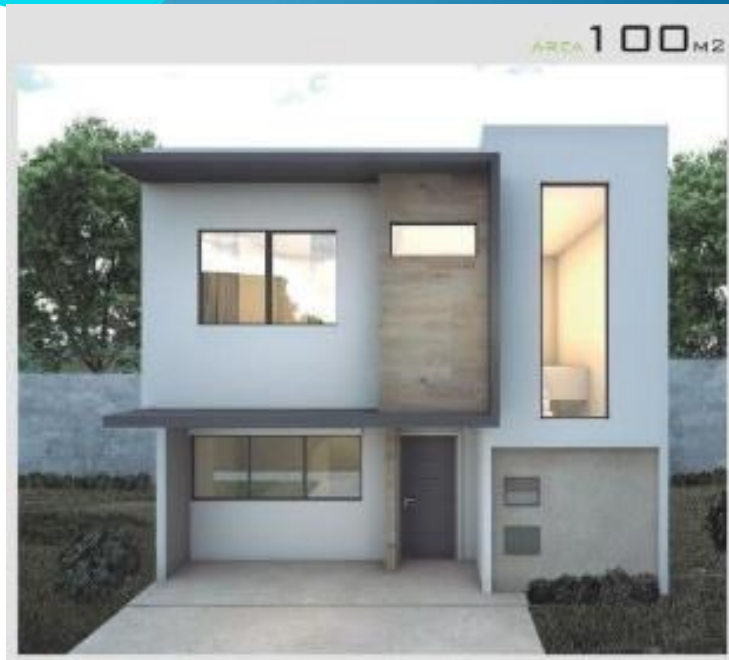
Laundry



House cost & repayment		
House size	SQM	92
Cost per SQM		\$ 504
Total build cost		\$ 46368
Intrest rate		% 15%
Total per anum		\$ 6955,2
Total period	Years	20
Total intrest + Cost to build		\$ 185472
Monthly repayment		\$ 772,8

Total repayment to investors per month	\$ 656,88
Total repayment of intrest per month	5% 32,84
Toatl amount	\$ 689,72
Totoal to government per month	\$ 83,08

MODEL 14



Bedrooms 3

Bathrooms 2 + ½

Lounge

Dining room

Kitchen

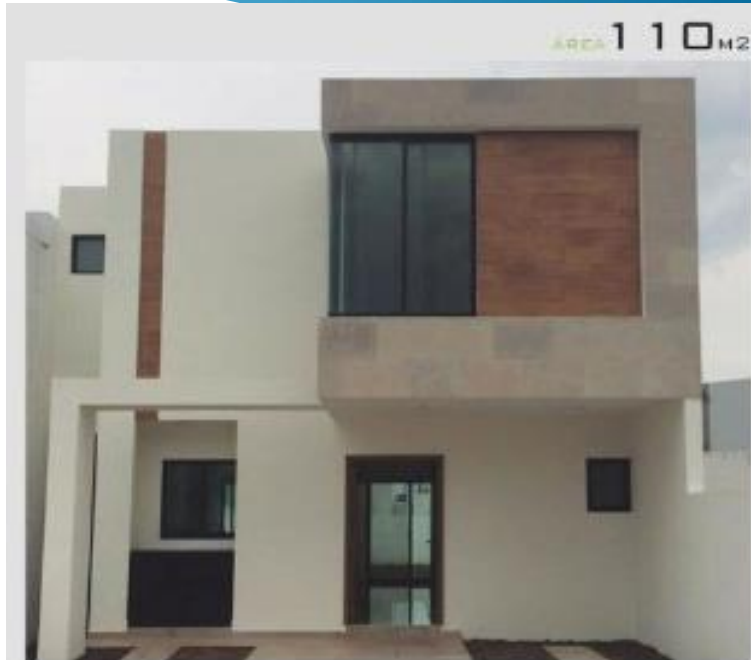
Laundry



House cost & repayment		
House size	SQM	100
Cost per SQM		\$ 504
Total build cost		\$ 50400
Intrest rate		% 15%
Total per anum		\$ 7560
Total period	Years	20
Total intrest + Cost to build		\$ 201600
Monthly repayment		\$ 840

Total repayment to investors per month	\$ 714
Total repayment of intrest per month	5% 35,7
Toatl amount	\$ 749,7
Totoal to government per month	\$ 90,3

MODEL 15



Bedrooms 3

Bathrooms 2 + ½

Lounge

Dining room

Kitchen

Laundry









House cost & repayment			Total repayment to investors	
House size	SQM	110	Total repayment to investors per month	\$ 785,4
Cost per SQM		\$ 504	Total repayment of intrest per month	5% 39,27
Total build cost		\$ 55440	Toatl amount	\$ 824,67
Intrest rate		% 15%	Total to government per month	\$ 99,33
Total per anum		\$ 8316		
Total period	Years	20		
Total intrest + Cost to build		\$ 221760		
Monthly repayment		\$ 924		

MODEL 16

AREA 123 M²



-  Bedrooms 4
-  Bathrooms 3 +1/2
-  Lounge
-  Dining room
-  Kitchen
-  Laundry

Bedrooms 4

Bathrooms 3 +1/2

Lounge

Dining room

Kitchen

Laundry



House cost & repayment		
House size	SQM	123
Cost per SQM		\$ 504
Total build cost		\$ 61992
Intrest rate		% 15%
Total per anum		\$ 9298,8
Total period	Years	20
Total intrest + Cost to build		\$ 247968
Monthly repayment		\$ 1033,2

Total repayment to investors per month	\$ 878,22
Total repayment of intrest per month	5% 43,91
Toatl amount	\$ 922,13
Totoal to government per month	\$ 111,07

MODEL 17



Bedrooms 3

Bathrooms 2 +1/2

Lounge

Dining room

Kitchen

Laundry



House cost & repayment			Total repayment to investors per month	
House size	SQM	132		\$ 942,48
Cost per SQM		\$ 504	Total repayment of intrest per month	5% 47,12
Total build cost		\$ 66528	Toatl amount	\$ 989,6
Intrest rate		% 15%	Total to government per month	\$ 119,2
Total per anum		\$ 9979,2		
Total period	Years	20		
Total intrest + Cost to build		\$ 266112		
Monthly repayment		\$ 1108,8		

CONTACT US

All Africa Housing (Pty) Ltd

contact details

David J van der Merwe (C.E.O).

+2783-249-5115.

davidj@allafricahousing.co.za

Wynand Mackenzie (Operations Director).

+27729911187.

wynand@allafricahousing.co.za

“We Endeavor to achieve”

A company dedicated to the Lord.